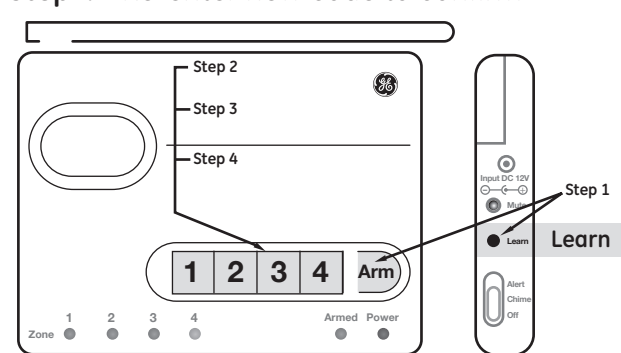


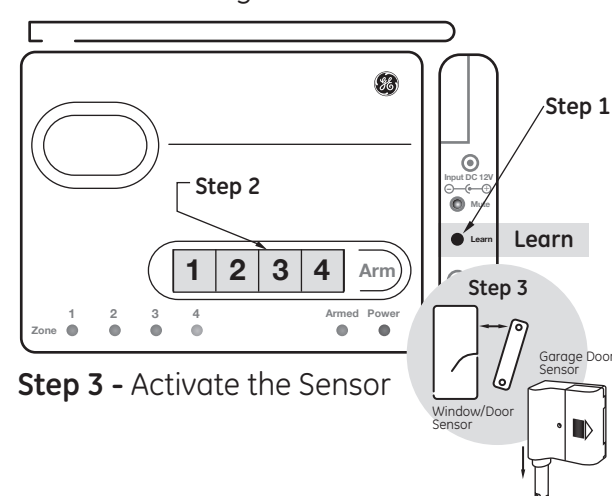
Creating a new security code

- Step 1** - On the Control Center press and hold the "Learn" button, then press and hold the "Arm" button together until a long beep sounds. Release buttons, the green power button will begin to flash.
- Step 2** - Enter the current code (default is 1234)
- Step 3** - Enter new code
- Step 4** - Re-enter new code to confirm



Add a Sensor to any Zone

- Step 1** - Press and hold the "Learn" button, for three seconds, the Control Center will sound a long beep. Release the button.
- Step 2** - Select the Zone number, the Zone LED will begin to flash.



Step 3 - Activate the Sensor

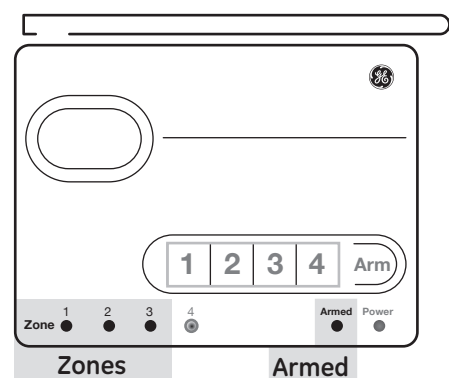
Zones 1,2, & 3 - Activating HOME or AWAY Mode

Armed/Alarm Mode

Alarm System

- Only Sensors in Zones 1, 2, 3 will trigger alarm
- **Arm/HOME** - Instant alarm
- **Arm/AWAY** - Delay ALARM allows for exit and re-entry

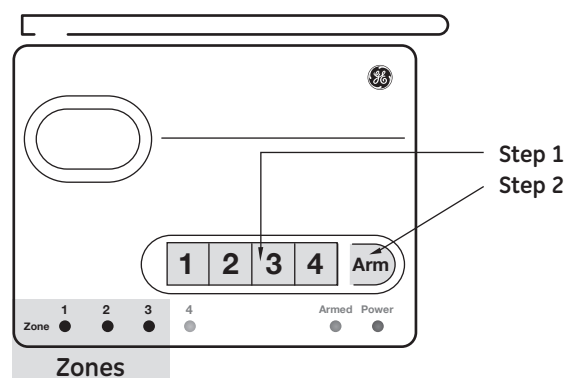
Note: Motion Sensor will only trigger alarm in AWAY Mode



HOME Mode

- Step 1** - Enter four digit Security Code
 - Step 2** - Press and Hold "Arm" button until the Armed LED indicator turns on
- Note:** Motion Sensors do not operate in HOME Mode

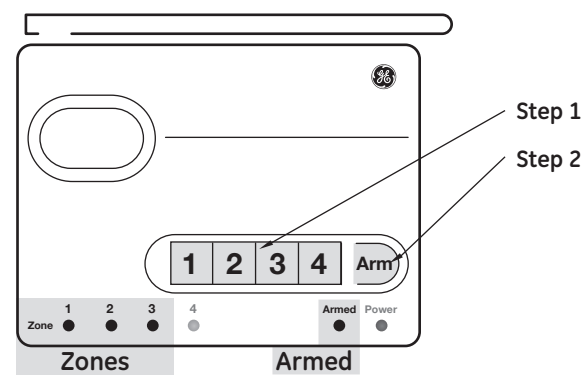
To disarm Alarm, enter four digit Security Code. The Armed LED indicator will turn off.



AWAY mode

- Step 1** - Enter four digit Security Code
- Step 2** - Press "Arm" button twice. The Armed LED indicator begins flashing. You have 45 seconds to exit before Alarm is active

To disarm Alarm, enter four digit Security Code. The Armed LED indicator will turn off.



Zone 1, 2, & 3 Visual/Audio Alert

Notification Mode

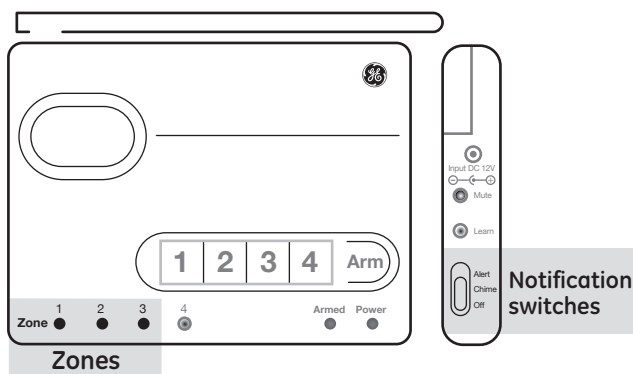
- Only Sensors in Zones 1, 2, 3 will activate notifications
- Select from visual alert, single chime or continuous alert (beeping) when Sensor is activated

Three Mode settings

- "Alert" - Continuous Tone
- "Chime" - Single Tone
- "Off" - Lights only

Example

- Zone 1 - Front door & back door
- Zone 2 - All windows
- Zone 3 - Gates & sheds



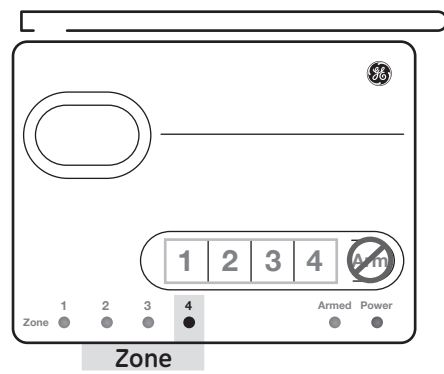
Zone 4 - Alert Only

Dedicated Alert Mode

Zone 4 is designed to continuously monitor select areas. Sensors assigned to Zone 4 will immediately and automatically start monitoring. No special settings are required.

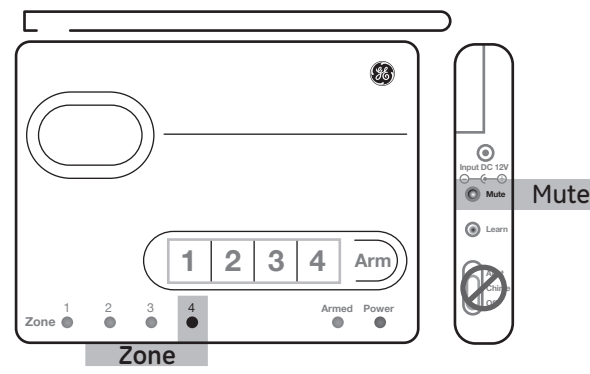
Note: Zone 4 is not controlled by Notification Mode switch, and does not activate alarm

Examples - water heater, garage door, back gate



Sensors in Zone 4

- When a Sensor is activated, the amber LED will flash and a continuous 4 beeps will sound.
- To temporarily stop Alert (beeping) once Sensor has been activated, press "Mute" button on Control Center.
- Sensor must be closed (i.e. door closed, water leak stopped) to discontinue Zone 4 notification



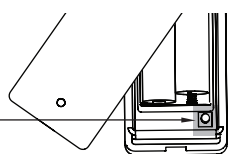
Silent Alert

Adding a Silent Alert

Install batteries

- Step 1** - Press and hold the "Learn" button on inside of the Silent Alert. The LED's will begin to flash

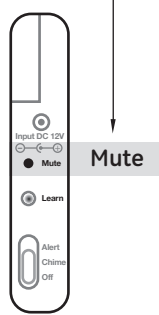
Step 1



Step 2

- Step 2** - Press and hold the "Mute" button on the Control Center for three seconds. The Control Center will sound 5 beeps, release "Mute" button

If the Silent Alert is in range, the LED's will stop flashing. This indicates the Silent Alert has been added to the Control Center.

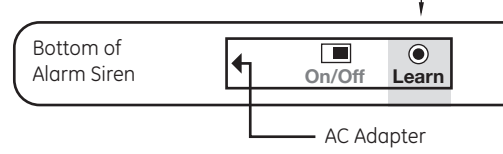


Alarm Siren

Adding an Alarm Siren

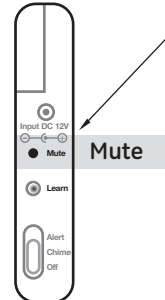
Plug-in AC Adapter

- Step 1** - Press and hold the "Learn" button on inside of the Alarm Siren. The LED's will begin to flash



- Step 2** - Press and hold the "Mute" button on the Control Center for three seconds. The Control Center will sound 5 beeps, release "Mute" button

If the Alarm Siren is in range the LED's will stop flashing. This indicates the Alarm Siren has been added to the Control Center.



Zone indicators - Each number indicates a unique zone. Each Zone can hold up to four Sensors. Any combination of Sensors types can be assigned to any of the four Zones.

Learn Button - Used to link Sensors and Accessories to the Control Center. Also used to change the Security Code.

Number Buttons - Used to assign Sensors to Zone, bypass Zones, and Arm/Disarm Alarm.

Mute Button - Used to silence the Notification Alert. Also used to send test signals to accessories.

ARM Button - Used to ARM/DISARM. Also used for changing the Security Code.

See User's Manual for more information.

